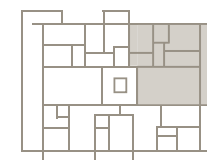
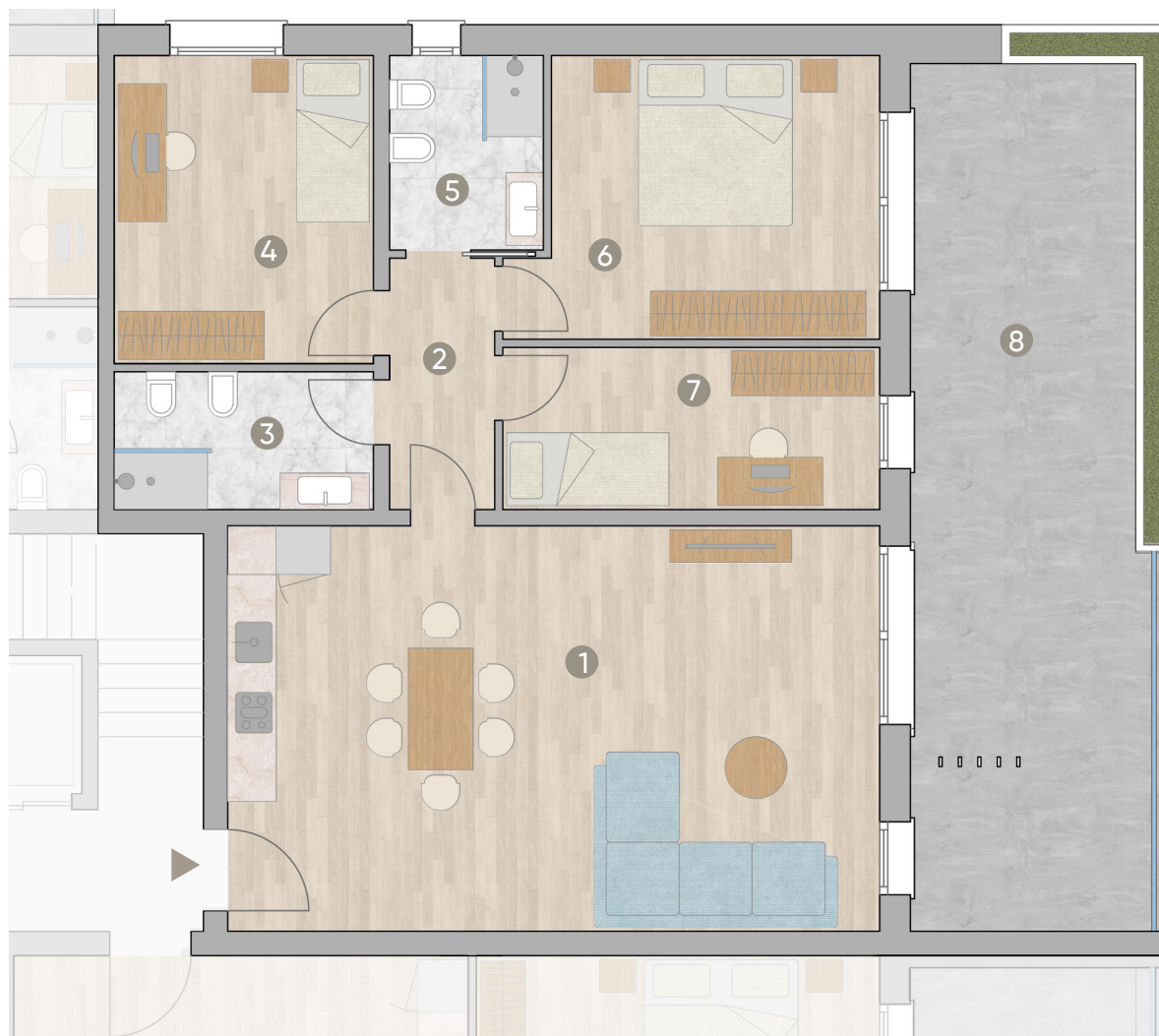


APPARTAMENTO 6



| |
|----------|
| 3 |
| 2 |
| 1 |
| T |

90,46 MQ

| | MQ |
|--------------------|-------|
| 1 soggiorno-cucina | 40,22 |
| 2 disimpegno | 4,02 |
| 3 bagno | 5,44 |
| 4 camera | 12,15 |
| 5 bagno | 4,55 |
| 6 matrimoniale | 14,78 |
| 7 camera | 9,30 |
| 8 terrazza | 30,69 |
| garage A6 | 20,01 |